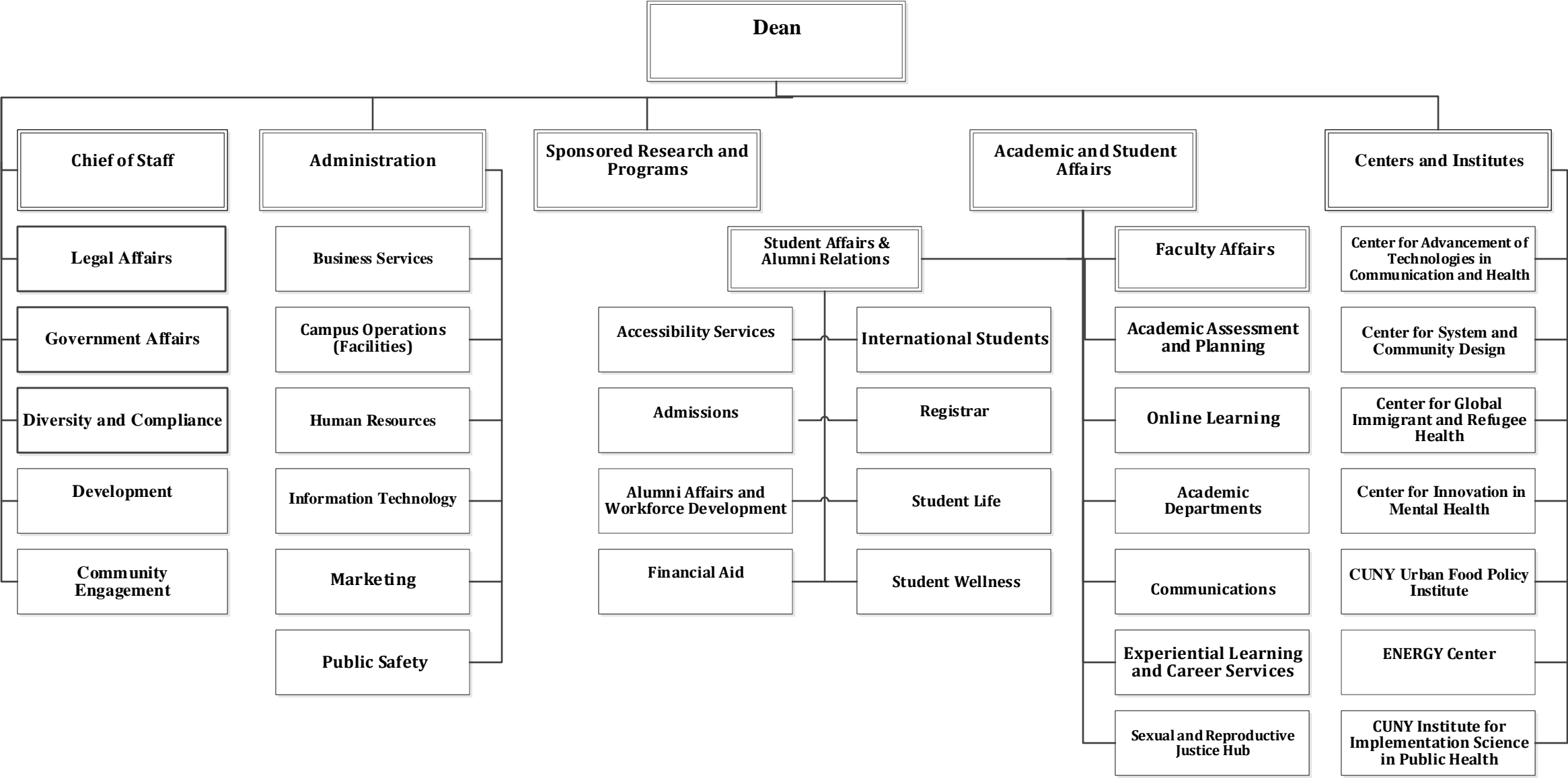
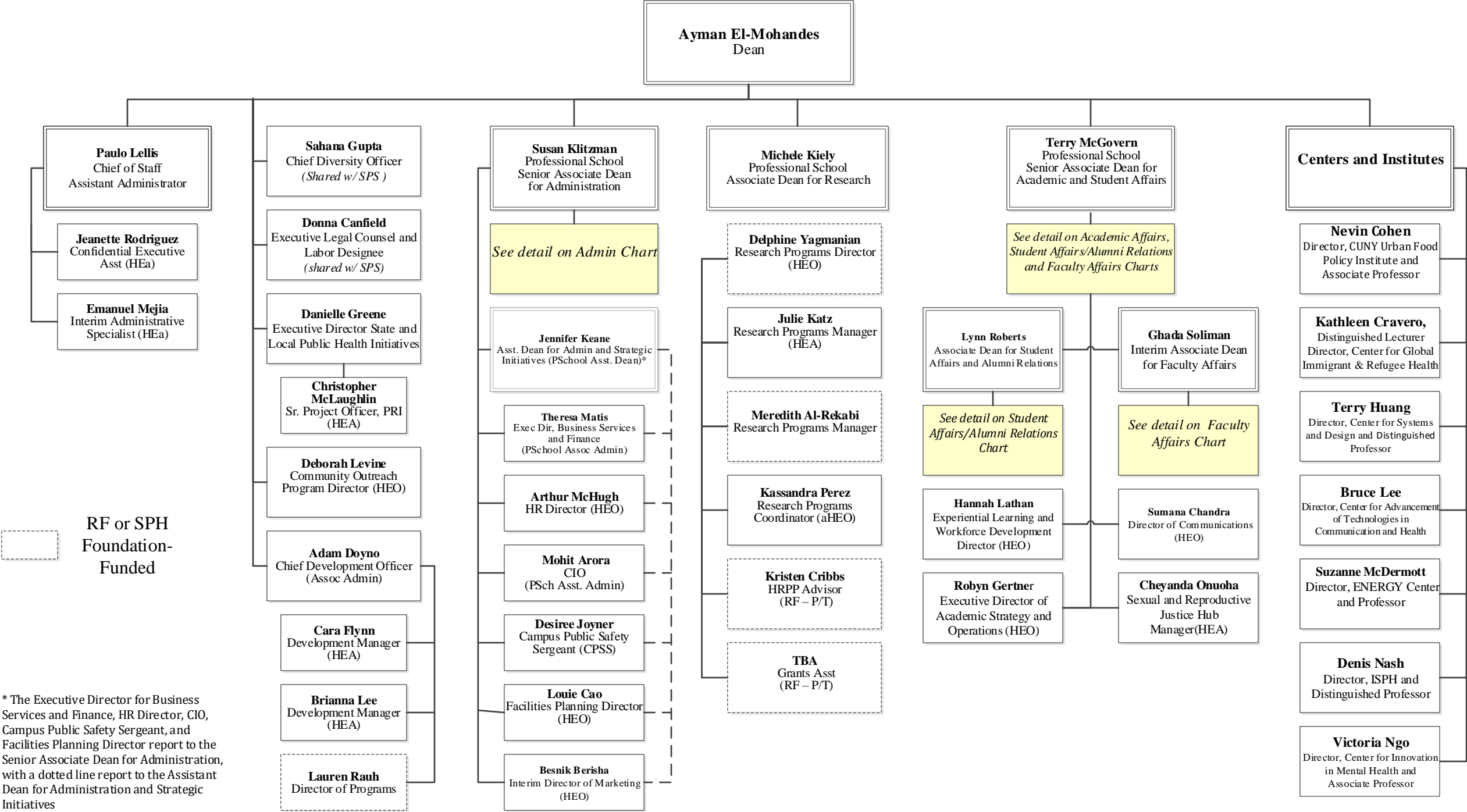


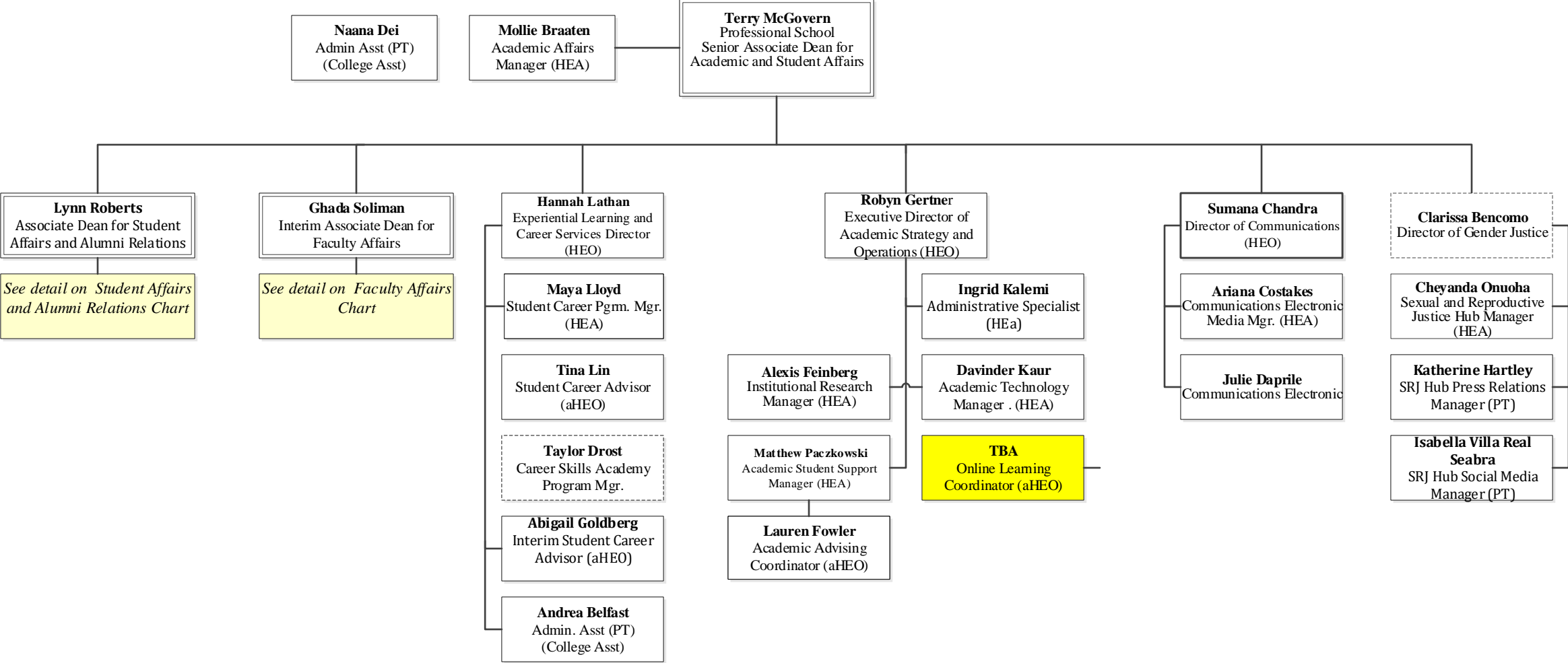
CUNY Graduate School of Public Health and Health Policy - Table of Organization – 2/1/2025



CUNY Graduate School of Public Health and Health Policy Table of Organization  
2/1/2025

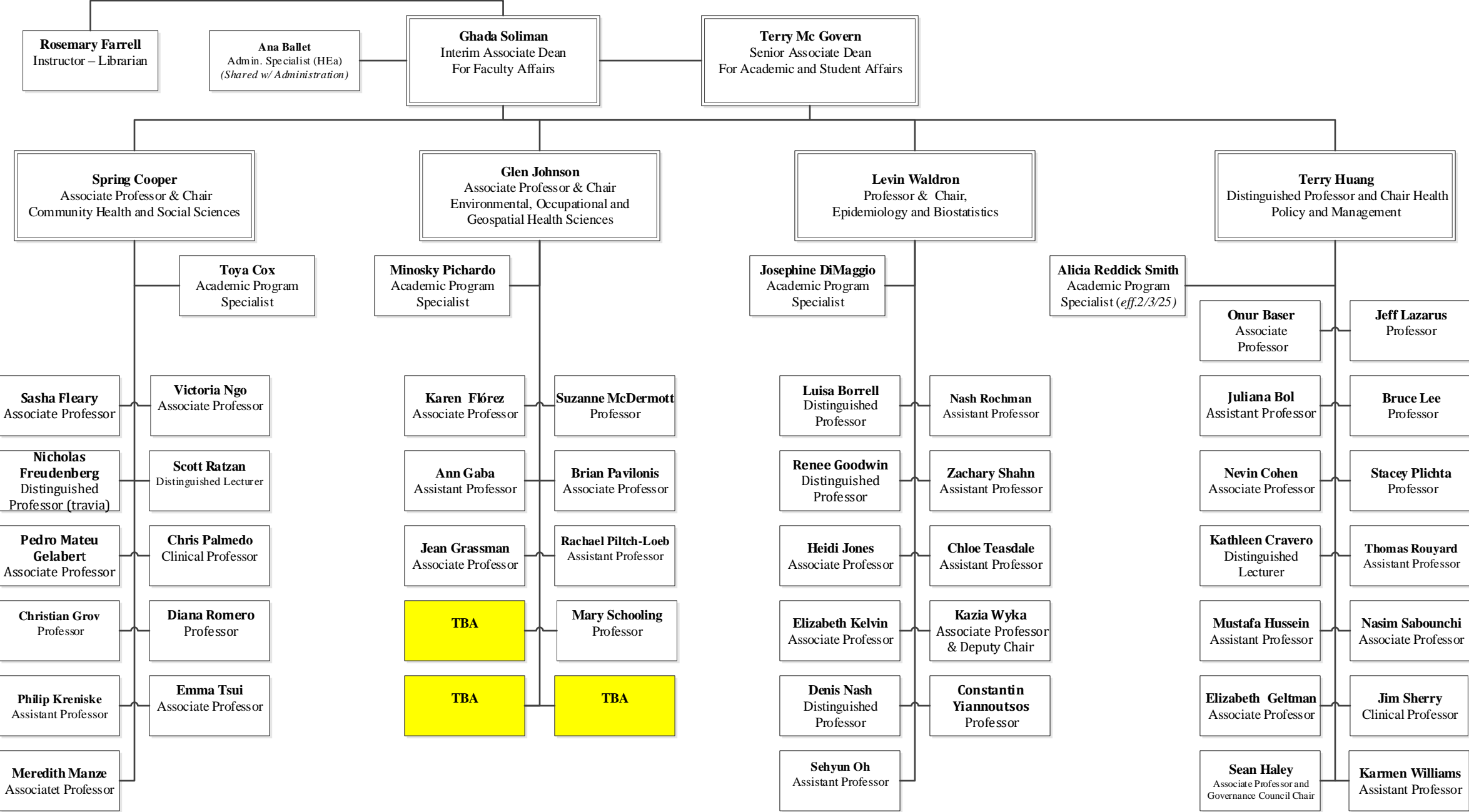


CUNY Graduate School of Public Health and Health Policy  
Academic Affairs  
Table of Organization  
2/1/2025



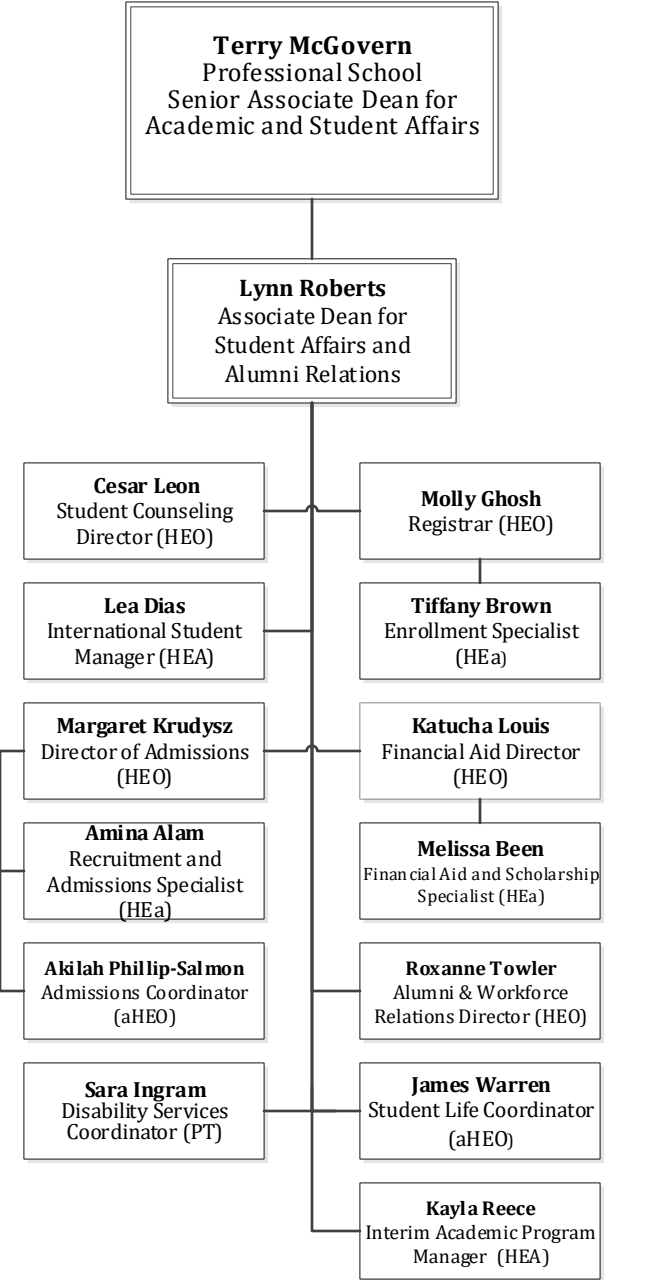
 RF or SPH  
Foundation-  
Funded

CUNY Graduate School of Public Health and Health Policy  
Faculty Affairs - Table of Organization – FT Faculty and Staff  
2/1/2025

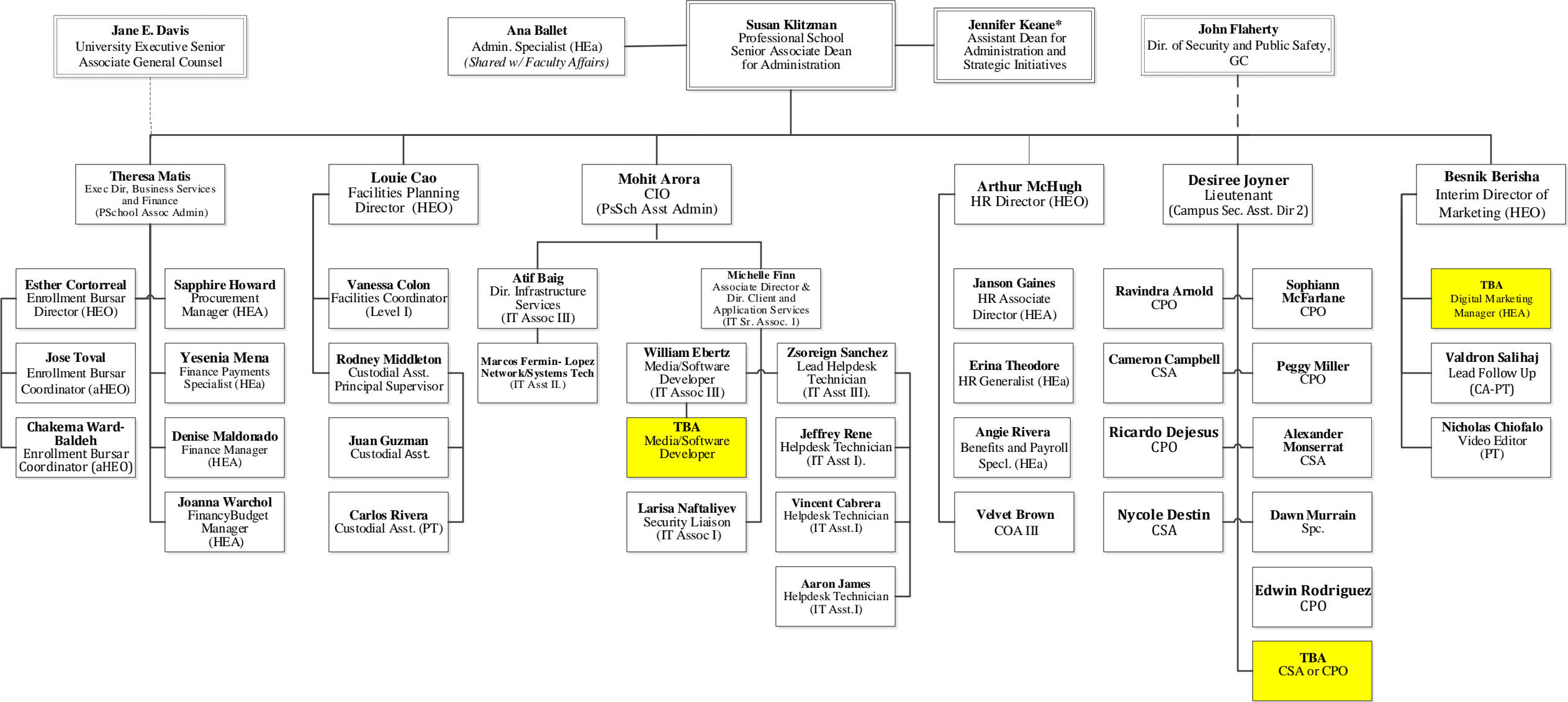


\*Excludes Research Faculty who are not affiliated with Academic Departments

CUNY Graduate School of Public Health and Health Policy  
Student Affairs and Alumni Relations  
Table of Organization – FT Faculty and Staff  
2/1/2025

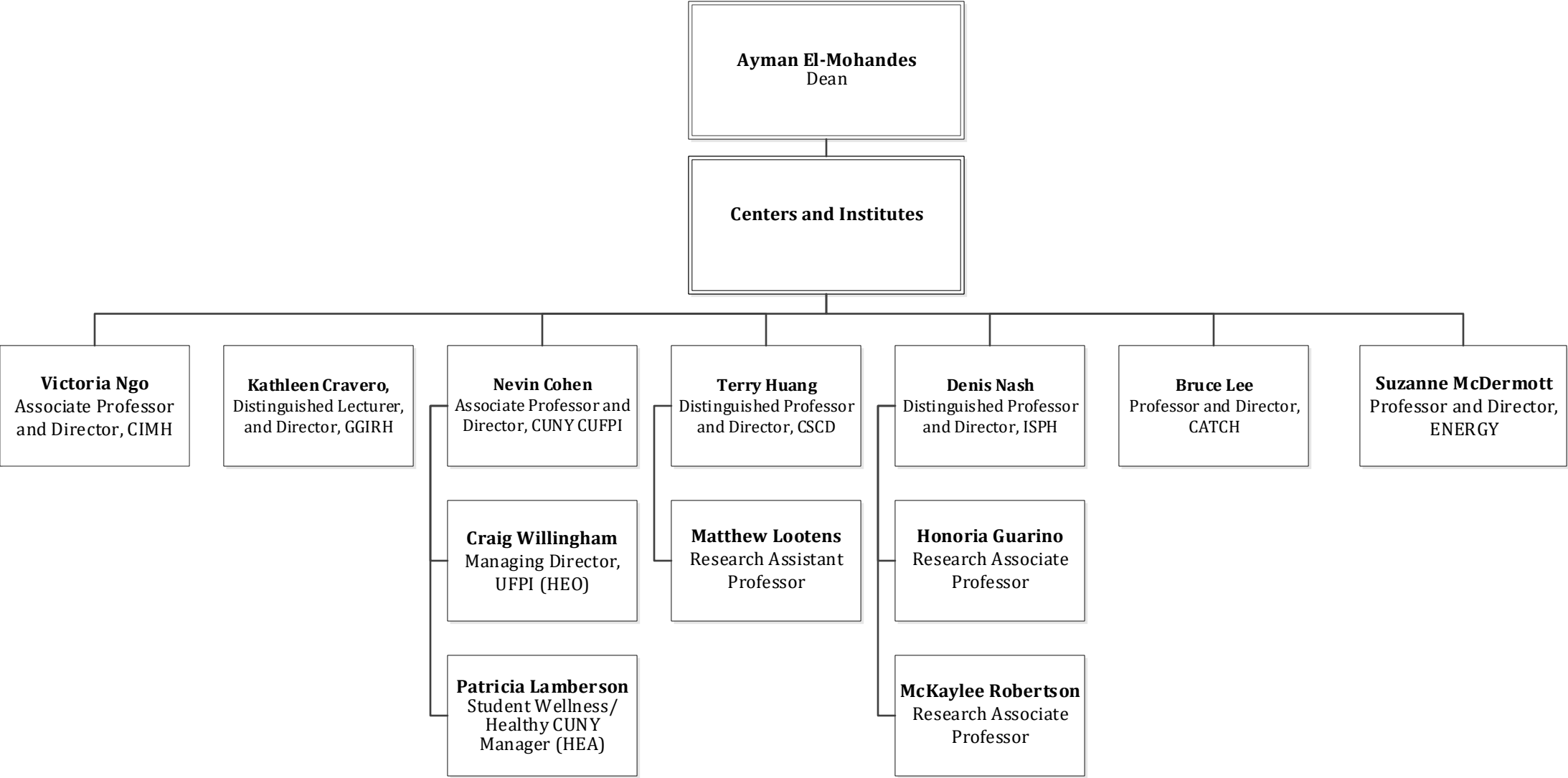


**CUNY Graduate School of Public Health and Health Policy**  
**Administrative Services Table of Organization – Staff**  
**2/1/2025**



\* The Executive Director for Business Services and Finance, HR Director, CIO, Campus Public Safety Sergeant, and Facilities Planning Director report to the Senior Associate Dean for Administration, with a dotted line report to the Assistant Dean for Administration and Strategic Initiatives

CUNY Graduate School of Public Health and Health Policy  
Centers and Institutes – Table of Organization –  
FT Tax-Levy Faculty and Staff  
2/1/2025



CIMH: Center for Innovation in Mental Health  
GGIRH: Center for Global, Immigrant and Refugee Health  
CUFPI: CUNY Urban Food Policy Institute  
CSCD: Center for Systems and Community Design  
ISPH: Institute for Implementation Science in Public Health  
CATCH: Center for Advancement of Technologies in Communication and Health  
ENERGY: Environmental Justice to Enrich and Engage NYC

**CUNY Graduate School of Public Health and Health Policy  
Centers and Institutes – Table of Organization –  
FT Tax-Levy Faculty and Staff  
2/1/2025**

